



**Cambridge International Examinations**  
Cambridge International General Certificate of Secondary Education

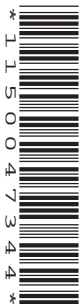
CANDIDATE  
NAME

CENTRE  
NUMBER

--	--	--	--	--

CANDIDATE  
NUMBER

--	--	--	--



**BIOLOGY**

**0610/42**

Paper 4 Theory (Extended)

**October/November 2017**

**1 hour 15 minutes**

Candidates answer on the Question Paper.

No Additional Materials are required.

**READ THESE INSTRUCTIONS FIRST**

Write your Centre number, candidate number and name on all the work you hand in.

Write in dark blue or black pen.

You may use a pencil for any diagrams or graphs.

Do not use staples, paper clips, glue or correction fluid.

**DO NOT WRITE IN ANY BARCODES.**

Answer **all** questions.

Electronic calculators may be used.

You may lose marks if you do not show your working or if you do not use appropriate units.

At the end of the examination, fasten all your work securely together.

The number of marks is given in brackets [ ] at the end of each question or part question.

This syllabus is approved for use in England, Wales and Northern Ireland as a Cambridge International Level 1/Level 2 Certificate.

This document consists of **19** printed pages and **1** blank page.

**BLANK PAGE**

1 The lungs and the kidneys are part of the excretory system of mammals.

- (a) (i) State the name of **one** substance that is excreted from the lungs and state where in the body it is produced.

name .....

site of production .....

[2]

- (ii) State the name of **one** excretory substance, that is removed by the kidneys, that contains nitrogen.

Explain why it is excreted.

name .....

explanation .....

.....

[2]

(b) Blood is filtered as it flows through the kidneys.

- (i) State the name of the structure within a kidney that filters the blood.

.....[1]

- (ii) State **two** components of blood that do **not** pass through the filter.

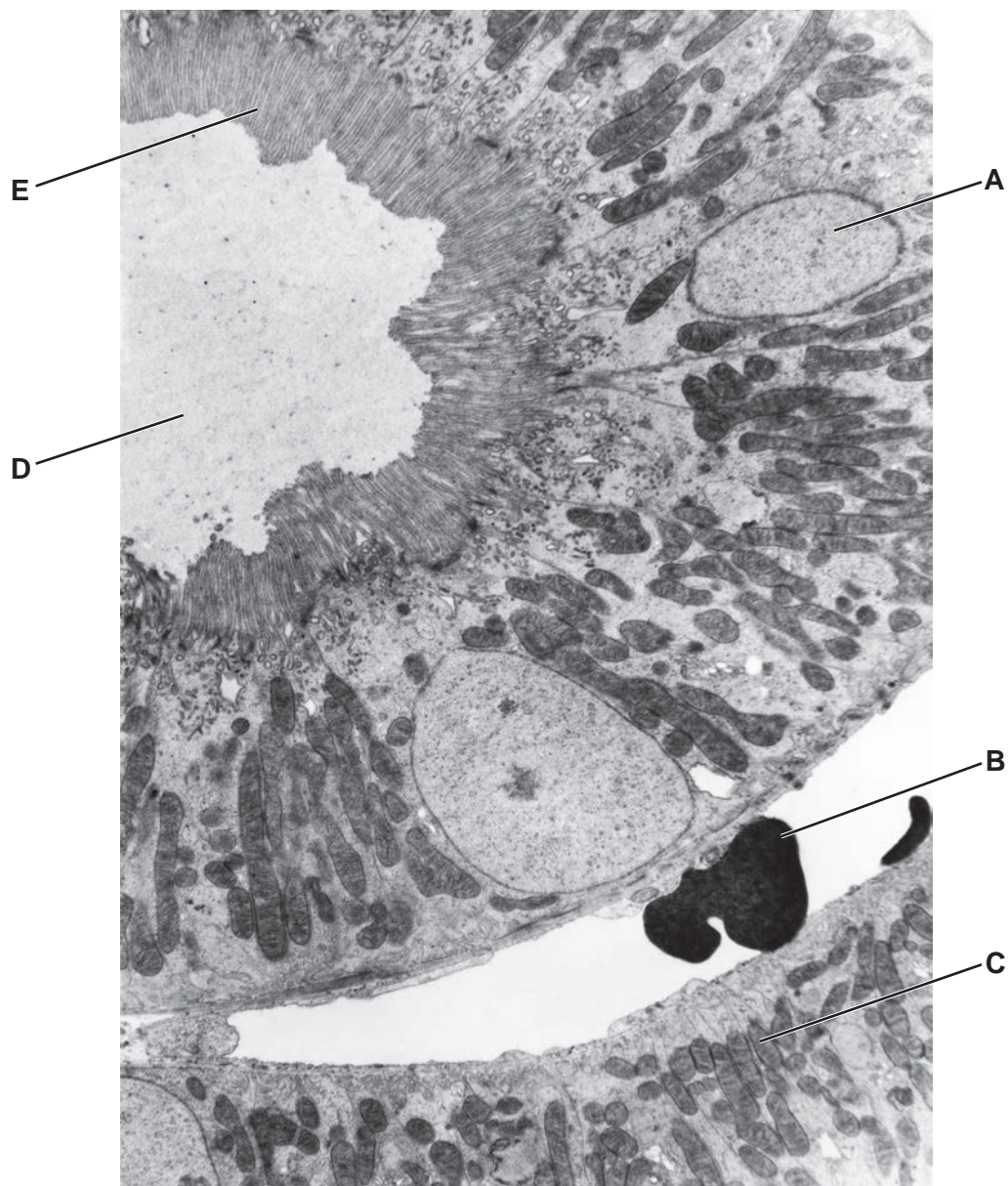
1 .....

2 .....

[2]

- (c) The filtrate which is formed from the blood in the kidneys contains many useful substances, which are reabsorbed into the blood.

Fig. 1.1 is a photomicrograph of a cross-section of some of the cells that carry out reabsorption.



**Fig. 1.1**

- (i) Complete the table by stating the letter in Fig. 1.1 that identifies each structure.

structure	letter on Fig. 1.1
microvilli	
nucleus	
mitochondrion	

[3]

(ii) State **one** function of the nucleus.

.....  
.....[1]

(iii) State the name of **one** part of the mammalian body **other than** the kidney that has cells with microvilli.

.....[1]

(iv) The cells that line the kidney tubules, such as those in Fig. 1.1, absorb many compounds from the filtrate.

Use Fig. 1.1 to explain how the cells are adapted for absorption.

.....  
.....  
.....  
.....  
.....  
.....  
.....  
.....  
.....  
.....  
.....[4]

[Total: 16]

- 2 A person who wanted to begin a fitness programme did some vigorous exercise.

A fitness trainer took a drop of blood from the person's finger before, during and after vigorous exercise and tested it for lactic acid.

- (a) Explain why it is important that the equipment used for taking blood is clean (sterile).

.....

.....

.....

.....[2]

- (b) The results of the tests for lactic acid are shown in Fig. 2.1.

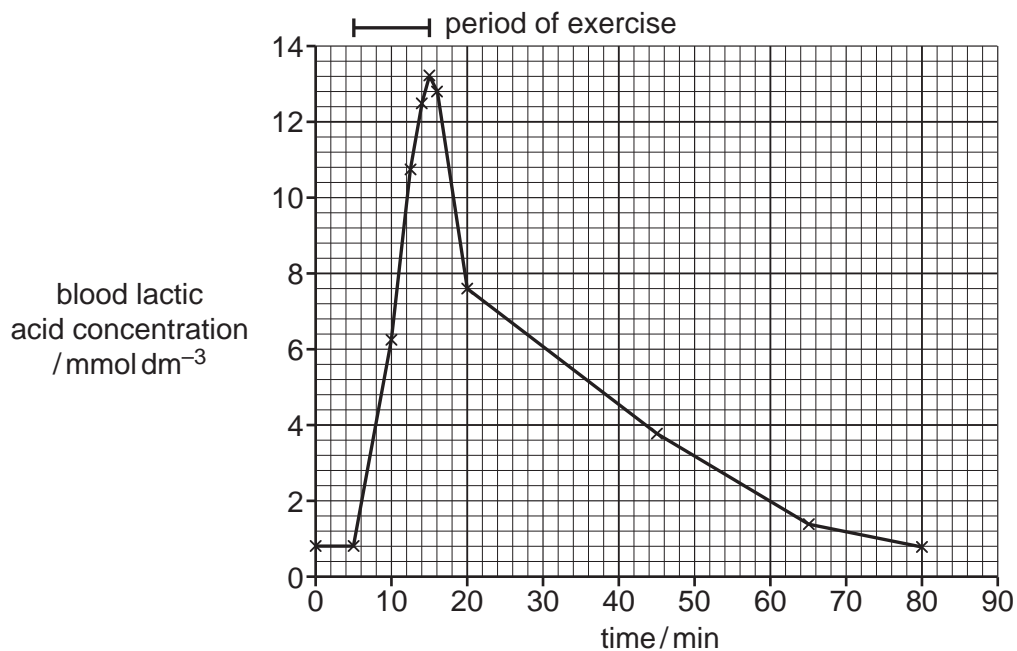


Fig. 2.1



- (c) The concentration of lactic acid in the blood of two athletes was investigated. One athlete, **P**, had been training and the other, **Q**, was returning to training after an injury.

Blood samples were taken from both athletes during a training session. The results are shown in Fig. 2.2.

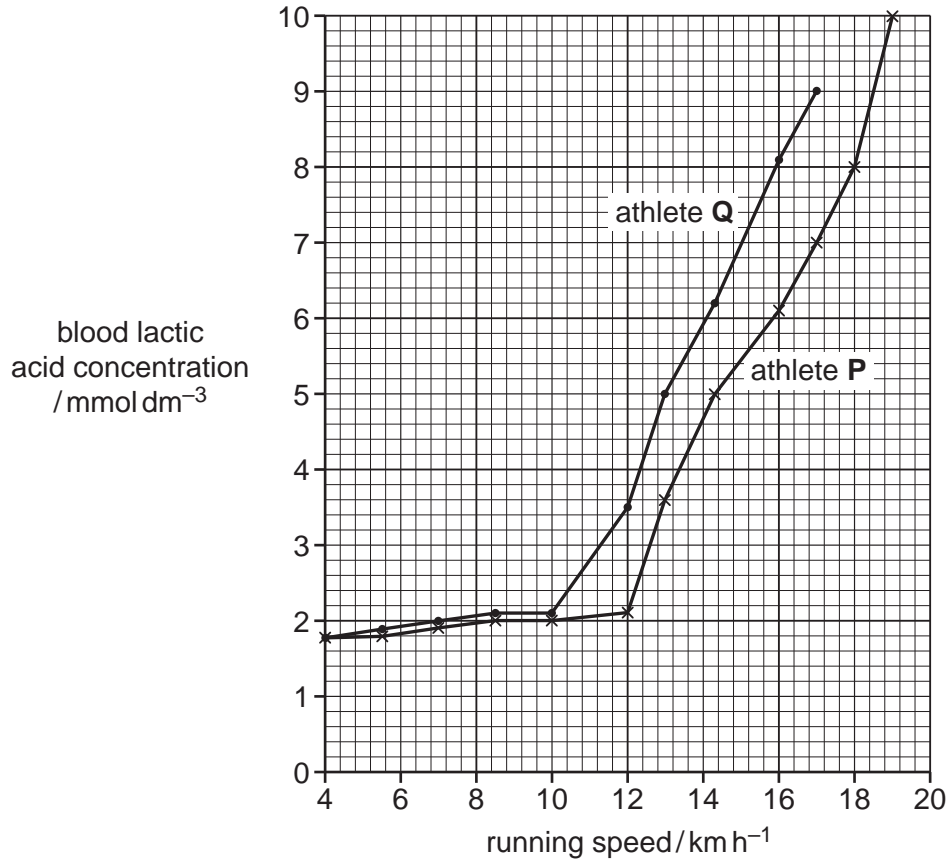


Fig. 2.2

- (i) The lactic acid threshold is the level of exercise where the lactic acid concentration begins to increase exponentially.

State the lactic acid threshold for athletes **P** and **Q**.

**P** .....  $\text{km h}^{-1}$

**Q** .....  $\text{km h}^{-1}$

[1]

- (ii) Suggest a reason for the difference in lactic acid threshold of athletes **P** and **Q**.

.....  
 .....  
 .....[1]









(d) Maintaining very large populations of farm animals is unsustainable.

Define the term *sustainable development*.

.....

.....

.....

.....

.....

.....[2]

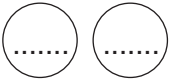
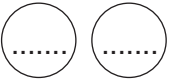
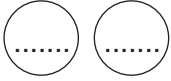
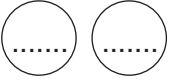
[Total: 12]



- (ii) Test crosses can be used to determine the genotype of a plant with purple flowers.

The genetic diagrams show test crosses for purple-flowered plants with two different genotypes.

Complete the genetic diagrams for test cross 1 and test cross 2.

	<b>test cross 1</b>		<b>test cross 2</b>
<i>parental phenotype</i>	purple flowers × white flowers		purple flowers × white flowers
<i>parental genotype</i>	Bb × .....		BB × .....
<i>genotypes of gametes</i>	 + 		 + 
<i>offspring genotypes</i>	.....		.....
<i>offspring phenotypes</i>	.....		.....

[5]

- (c) Pickerel weed, *Pontederia cordata*, is a plant that grows in shallow water on the edges of ponds and lakes in North America.

A few seedlings of these plants are white. The white seedlings cannot make chlorophyll.

Researchers carried out several crosses using pickerel weed plants.

Their results are shown in Table 4.2.

**Table 4.2**

cross	number of offspring	
	green	white
1	149	0
2	70	22

- (i) Select suitable symbols for the alleles and state the possible genotypes of the parents for each cross.

cross 1 .....

cross 2 .....

[2]

- (ii) It is **not** possible to carry out a test cross with pickerel weed plants.

Suggest why.

.....

.....

.....

.....

.....[2]

[Total: 17]

- 5 Fig. 5.1 shows the bacterium *Helicobacter pylori*, which is a human pathogen.



**Fig. 5.1**

- (a) State the genus of *Helicobacter pylori*.

.....[1]

- (b) *H. pylori* is placed in the prokaryote kingdom.

State **two** structural features that *H. pylori* shares with other prokaryotes.

1 .....

2 .....

[2]

- (c) (i) *H. pylori* can cause infections in the stomach.

Suggest how this infection could be treated.

.....[1]

- (ii) State **one** natural body defence that is found in the stomach.

.....[1]





- 6 Glucose is absorbed into the blood in the small intestine. Fig. 6.1 shows the human circulatory system and the pathway taken by molecules, such as glucose, when they travel in the blood.

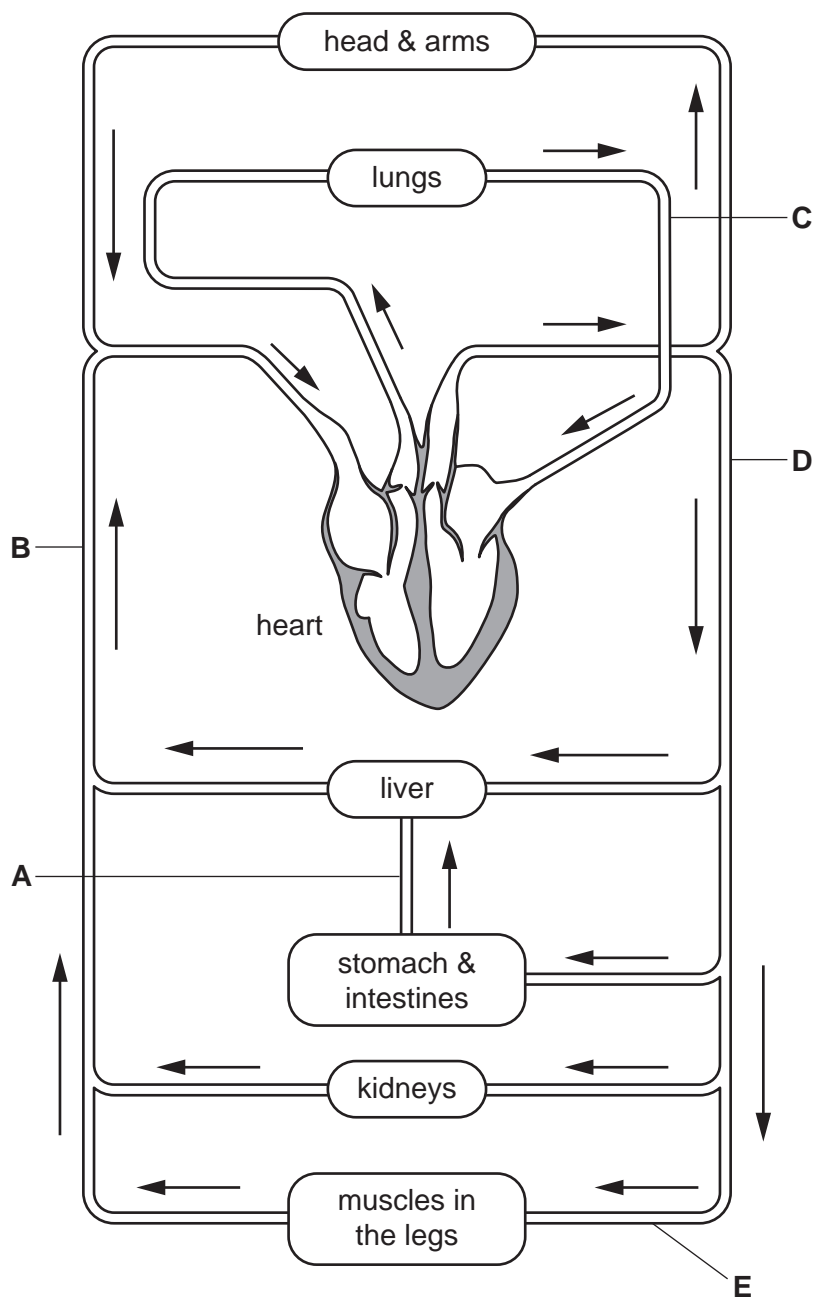


Fig. 6.1



